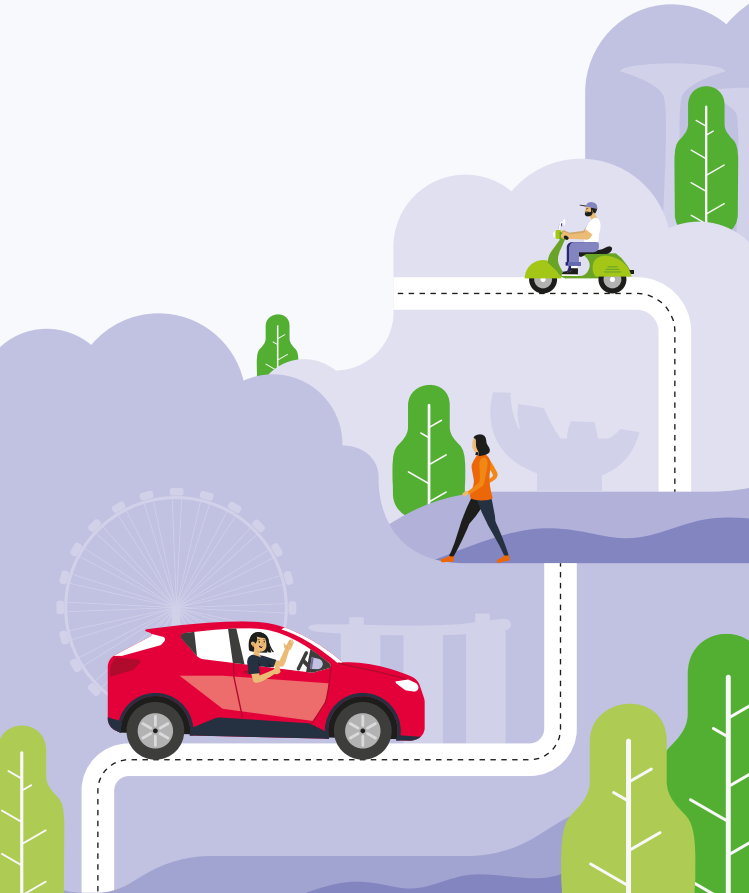


ERP 2.0

All you need to know about switching from IU to ERP 2.0's On-Board-Unit



The all-new OBU

With the switch to ERP 2.0, motorists will need to replace their In-vehicle Unit (IU) with LTA's new On-Board Unit (OBU). Here are some key things to know about the OBU and getting it installed.



There are 2 types of OBU:

A The three-piece OBU for most vehicles

Touchscreen Display



Antenna

Processing Unit



B The single-piece OBU for motorcycles only

Single-Piece Unit



Key features:



Provides ERP charging information at ERP charging locations, payment alerts and card balance.



Alerts at School Zones, Silver Zones, speed cameras and bus lanes (for three-piece OBU only).



Facilitates ERP and parking payment via valid CEPAS cards* (e.g., NETS Flashpay or NETS/EZ-Link Motoring cards).



In the future, it will also provide real-time traffic incident information and enable payment of usage licenses for off-peak cars, classic and vintage vehicles, checkpoint tolls, and roadside electronic parking.

Applicable for three-piece OBU

While we recommend that you install the Touchscreen Display, you have the option of not doing so. You can choose to access ERP information through compatible mobile applications instead.

*Note: CashCards and SimplyGo EZ-link cards are incompatible with the OBU.

Installing your OBU

Now that you've received your notice to install the OBU, here's what you'll need to do:

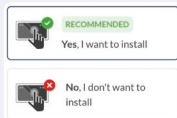
1 Book an appointment

Scan the QR code or visit go.gov.sg/book-obu to book an appointment.



2 Select whether you want to install the Touchscreen Display

Indicate your preference when booking your appointment.



Head to the workshop

Please be punctual as your time slot may be released if you are late. Installation time will vary depending on the make and model of your vehicle.

3



4 After installation

Your OBU is now ready for use. You may visit go.gov.sg/obu-eservices to view the transaction history and expiry date of your OBU warranty.

If you have opted to use a mobile application, you will need to register your smartphone via OneMotoring Digital Services before pairing it with your OBU.



Enjoy fuss-free ERP payments

Motorists are encouraged to sign up for backend payment to pay ERP charges using credit or debit cards.

Visit go.gov.sg/erp2-bep to sign up today.

As not all carpark support backend payment yet, do ensure that you have sufficient balance on your CEPAS card to pay for parking if necessary.

For more information about ERP 2.0
and the OBU installation process, please visit:



go.gov.sg/erp2-1m



go.gov.sg/erp2-guide

If you require further support or
have any other questions,
contact us through the form below.



go.gov.sg/erp2-contactus



@WeKeepYourWorldMoving



@ltasg



www.lta.gov.sg



@LTASingapore

