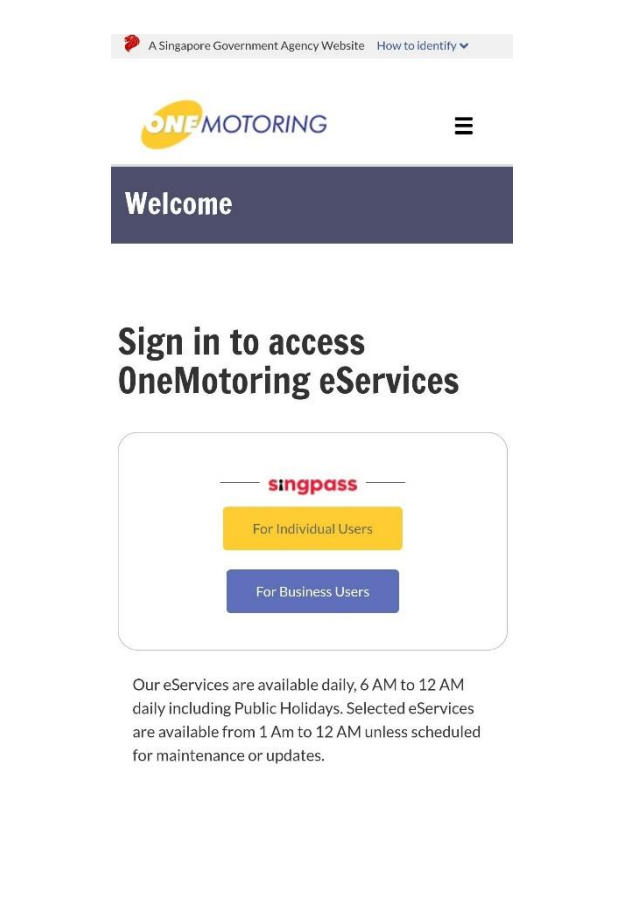
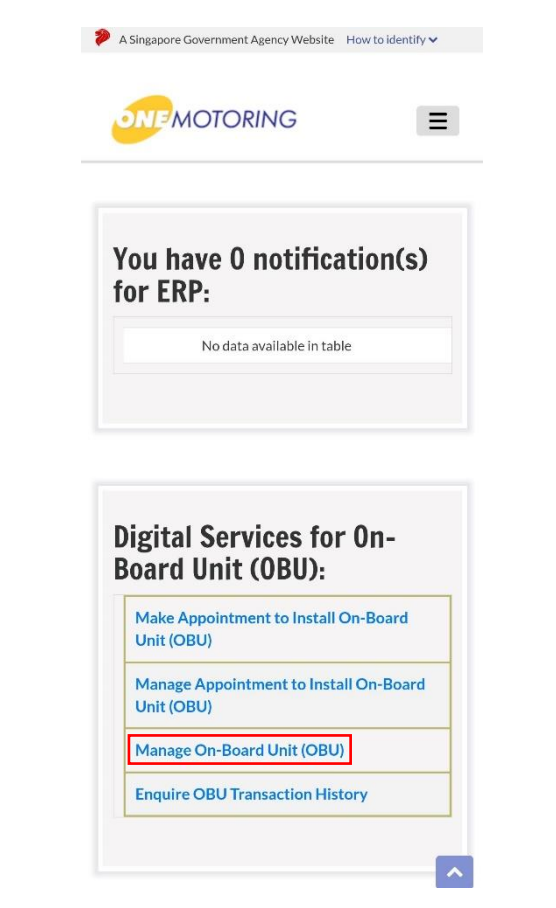
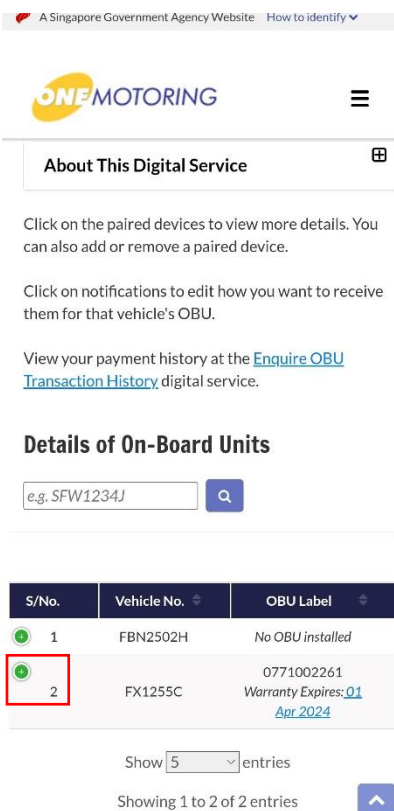


Steps to register your Phone's Bluetooth MAC Address

Step 1: Get ready your Phone's Bluetooth MAC Address for registration.	Step 2: Login to OneMotoring Digital Services - https://erp.lta.gov.sg/internet-esv	Step 3: Tap on "Manage On-Board Unit (OBU)".
<p><u>Steps* to find your Phone Bluetooth MAC Address:</u></p> <ul style="list-style-type: none"> • Open "Settings". • Tap "System". (Skip this step on some models) • Tap "About Phone" or "About device" • Tap "Status". • Bluetooth Address will be shown in the list. • Copy Bluetooth Address <p>*Actual steps may differ slightly depending on the phone model and version used.</p>		

Step 4: Tap on “+” of the OBU that you like to pair with your phone.



A Singapore Government Agency Website | How to identify

ONE MOTORING

About This Digital Service

Click on the paired devices to view more details. You can also add or remove a paired device.

Click on notifications to edit how you want to receive them for that vehicle's OBU.

View your payment history at the [Enquire OBU Transaction History](#) digital service.

Details of On-Board Units

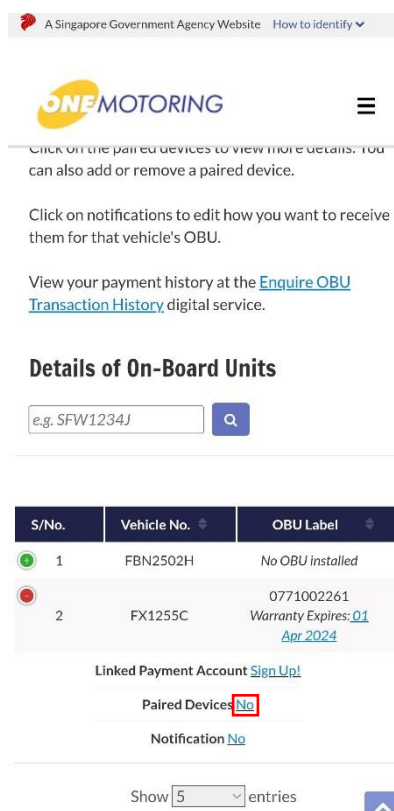
e.g. SFW1234J

S/No.	Vehicle No.	OBU Label
1	FBN2502H	No OBU installed
2	FX1255C	0771002261 Warranty Expires: 01 Apr 2024

Show 5 entries

Showing 1 to 2 of 2 entries

Step 5: Tap on “No” under Paired Devices.



A Singapore Government Agency Website | How to identify

ONE MOTORING

Click on the paired devices to view more details. You can also add or remove a paired device.

Click on notifications to edit how you want to receive them for that vehicle's OBU.

View your payment history at the [Enquire OBU Transaction History](#) digital service.

Details of On-Board Units

e.g. SFW1234J

S/No.	Vehicle No.	OBU Label
1	FBN2502H	No OBU installed
2	FX1255C	0771002261 Warranty Expires: 01 Apr 2024


Linked Payment Account [Sign Up!](#)

Paired Devices **No**

Notification [No](#)

Show 5 entries

Step 6: Tap on “Pair New Device”.



A Singapore Government Agency Website | How to identify

ONE MOTORING

Welcome, XXXX582A | Session Date: 21 Jul 2023

View/Edit On-Board Unit (OBU) Settings

Manage Paired Bluetooth Devices for On-Board Unit of FX1255C

You can pair a mobile device with your vehicle's On-Board Unit (OBU) to use apps, such as **name of all alternative OBU display app test**, which activates the device as an alternative display.

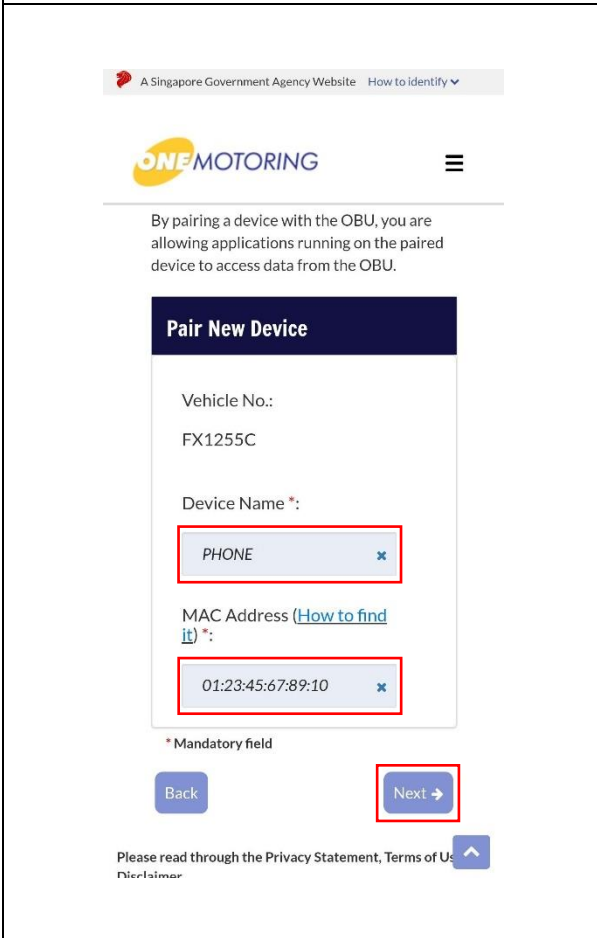
List of Bluetooth Devices

Select	S/No.	Device Name	MAC Address
No data available in table			

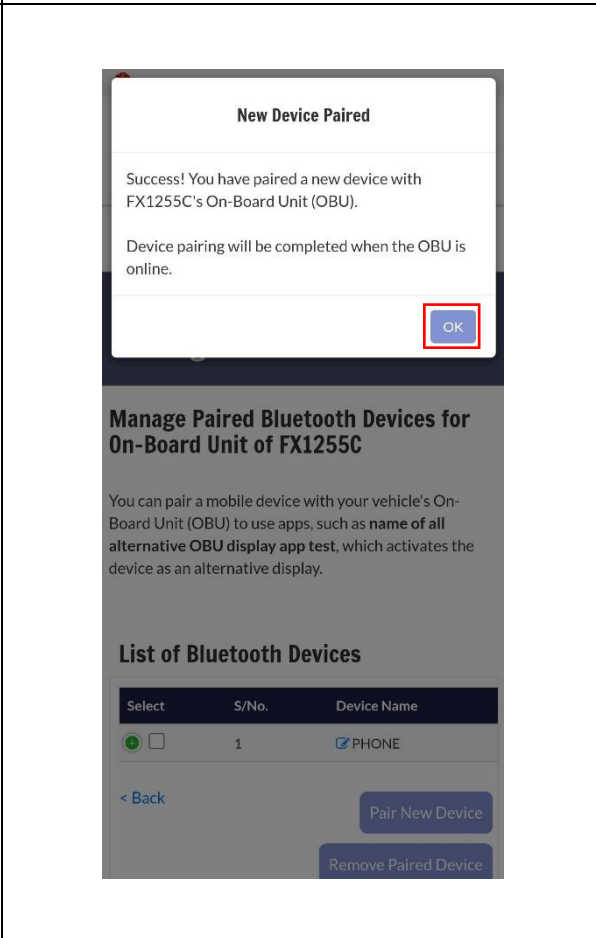
< Back

Pair New Device

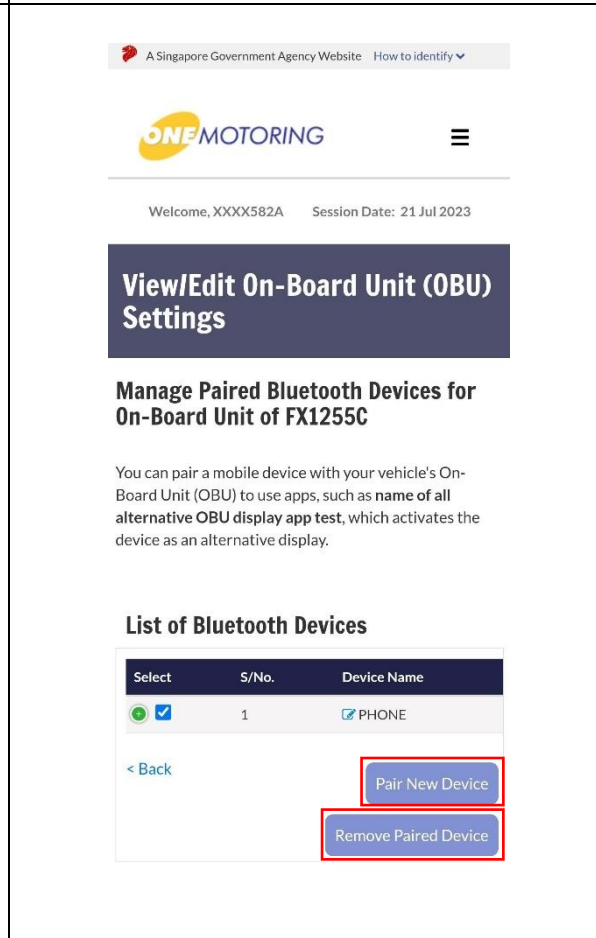
Step 7: Enter Device name and MAC Address and “Next”.



Step 8: Tap “Ok”.



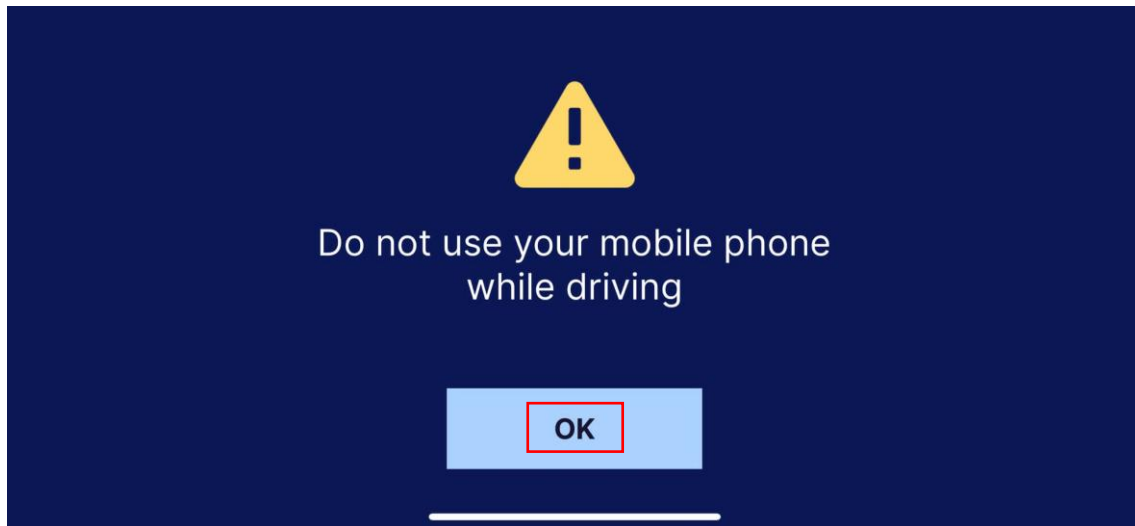
Step 9: You can add another Device or Remove added Device.



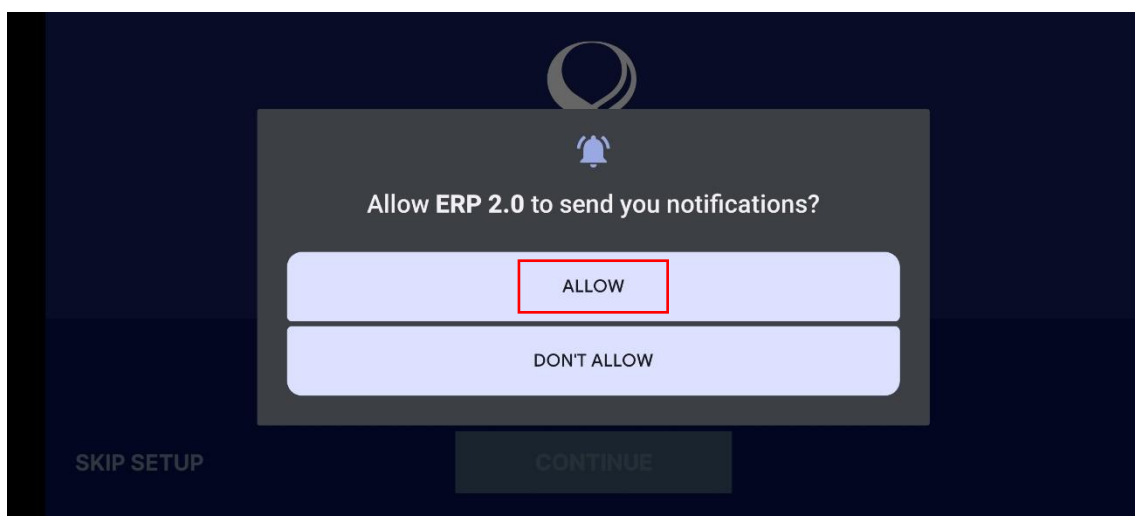
Steps to pair your Phone with OBU using ERP 2.0 Mobile Application



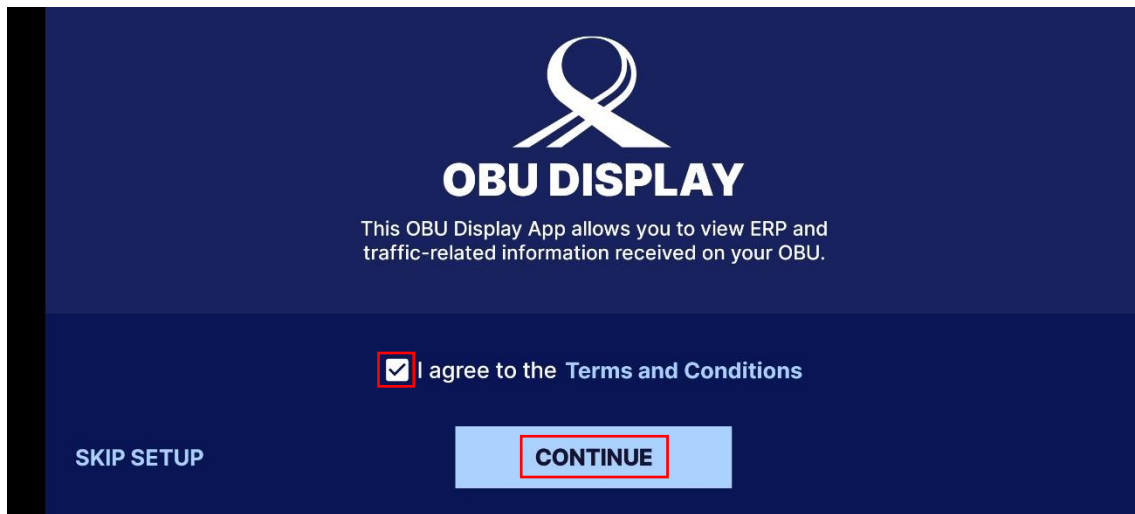
1. Launch "ERP 2.0" mobile application



2. Acknowledge Caution message while driving



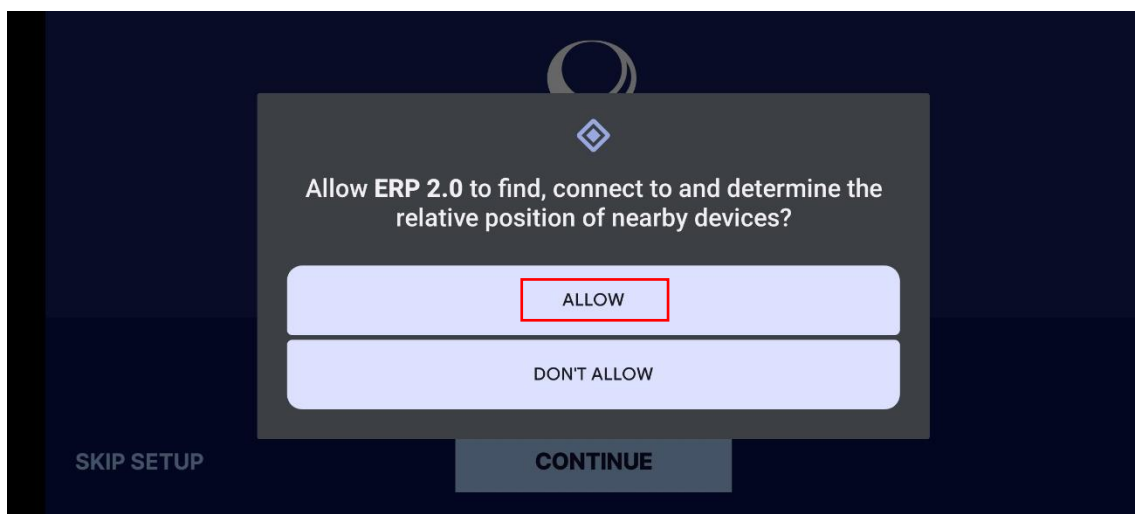
3. Allow "ERP 2.0" to send you Notifications



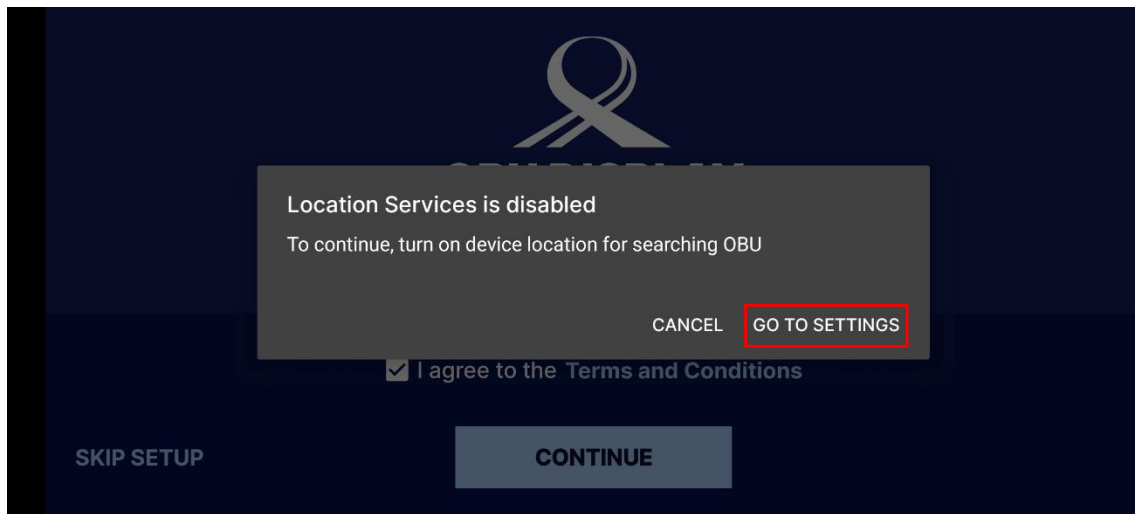
4. Agree to the Terms and Conditions to continue



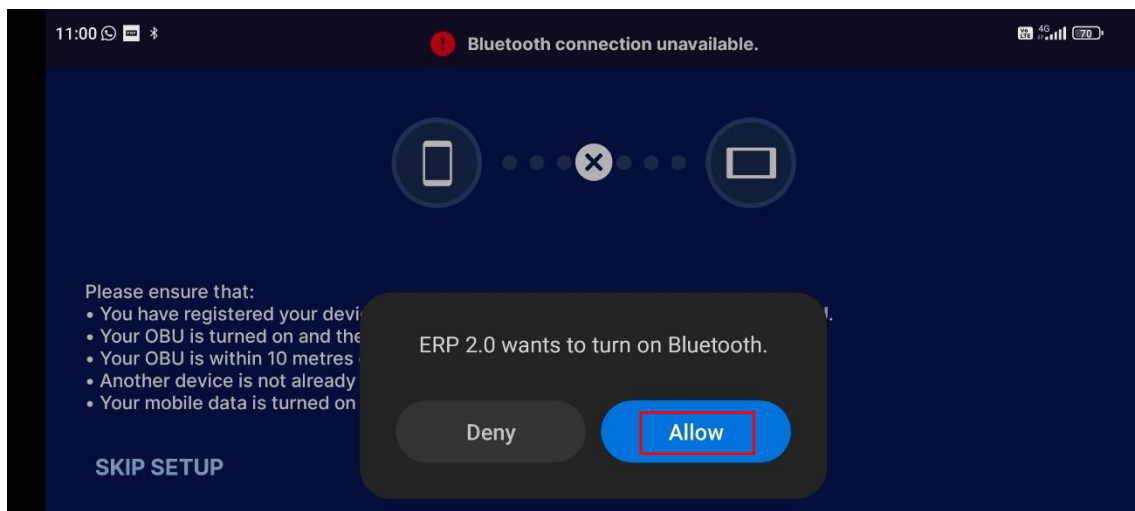
5. Allow "ERP 2.0" to access your OBU data



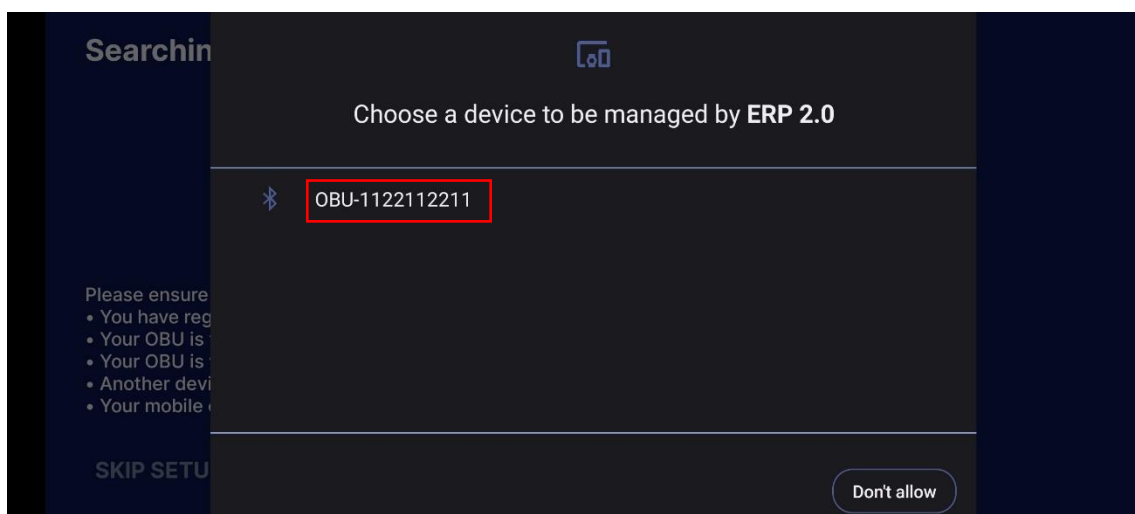
6. Allow "ERP 2.0" to search for your OBU



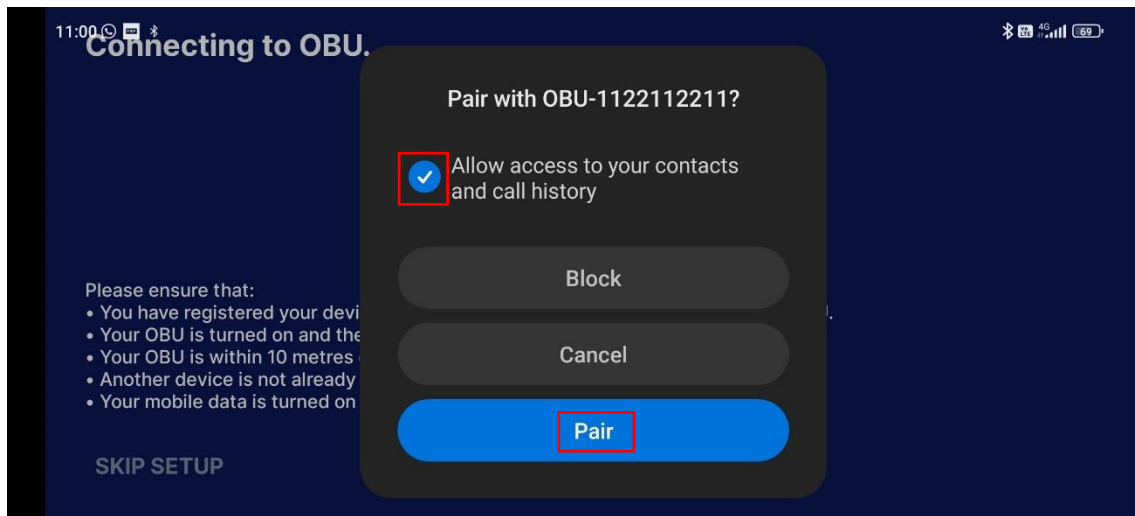
7. Turn on your device location to search for your OBU



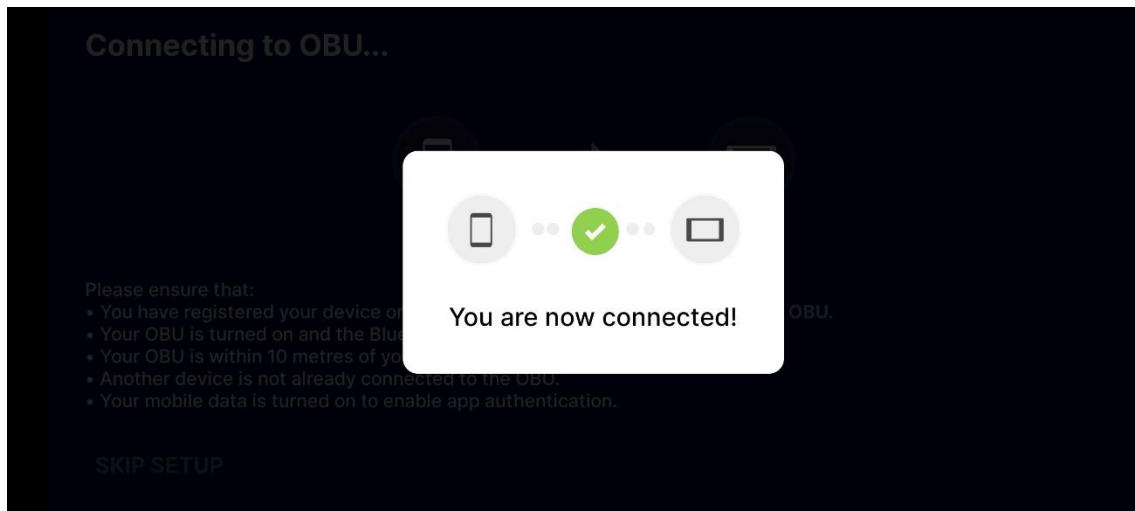
8. Allow "ERP 2.0" to turn on Bluetooth to search for your OBU



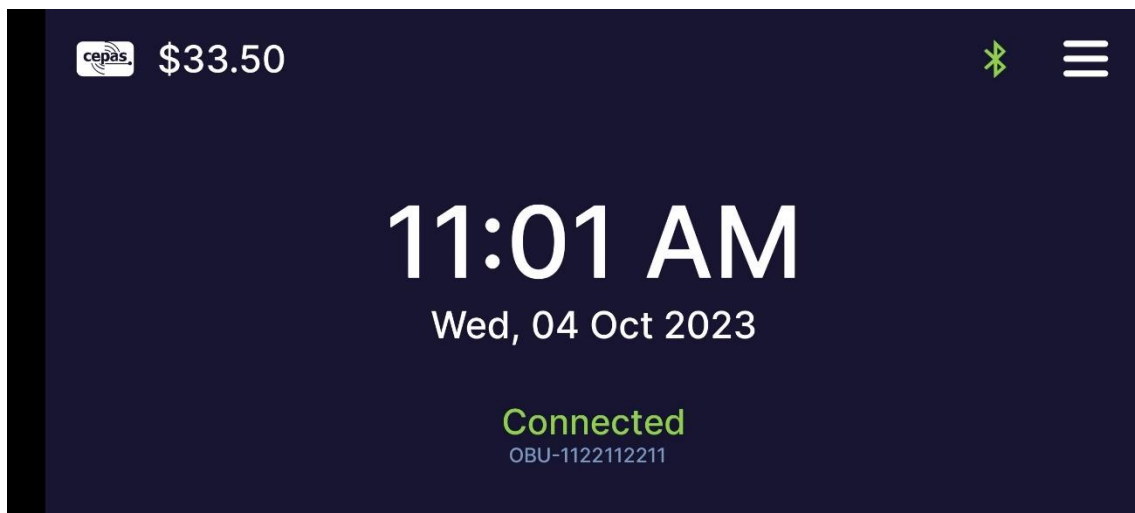
9. Tap on your OBU to pair



10. Tap "Pair" to pair with your OBU



11. Your Phone and OBU had connected successfully



12. Ready to use