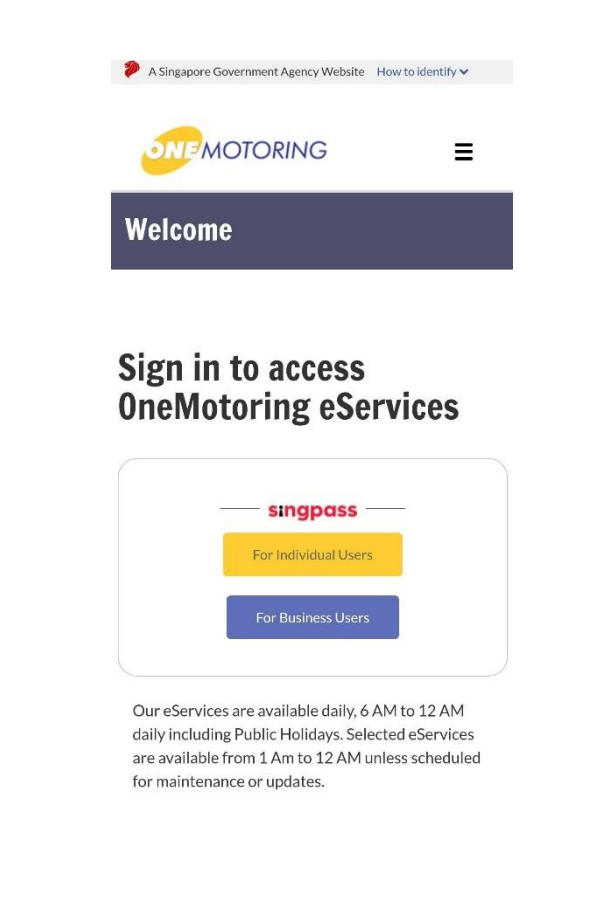
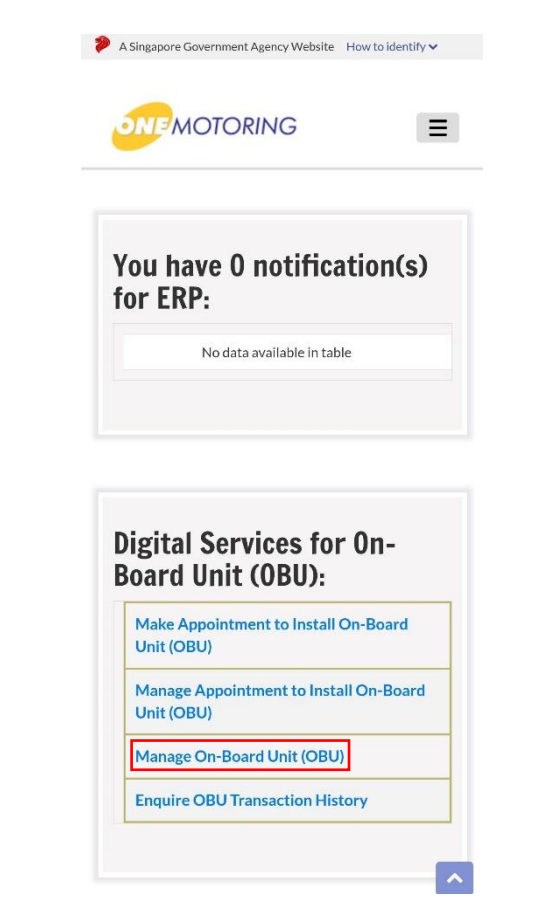


Steps to register your Phone's Bluetooth MAC Address

Step 1: Get ready your Phone's Bluetooth MAC Address for registration.	Step 2: Login to OneMotoring Digital Services - https://erp.lta.gov.sg/internet-esv	Step 3: Tap on "Manage On-Board Unit (OBU)".
<p><u>Steps* to find your Phone's Bluetooth MAC Address:</u></p> <ul style="list-style-type: none"> • Open "Settings". • Go to "General". • Tap "About". • Bluetooth Address will be shown in the list. • Copy Bluetooth Address <p>*Actual steps may differ slightly depending on the phone model and version used.</p>		

Step 4: Tap on “+” of the OBU that you like to pair with your phone.

A Singapore Government Agency Website How to identify ▾

ONE MOTORING ☰

About This Digital Service ⓘ

Click on the paired devices to view more details. You can also add or remove a paired device.

Click on notifications to edit how you want to receive them for that vehicle's OBU.

View your payment history at the [Enquire OBU Transaction History](#) digital service.

Details of On-Board Units

e.g. SFW1234J 🔍

S/No.	Vehicle No.	OBU Label
1	FBN2502H	No OBU installed
2	FX1255C	0771002261 Warranty Expires: 01 Apr 2024

Show 5 entries

Showing 1 to 2 of 2 entries ⬆

Step 5: Tap on “No” under Paired Devices.

A Singapore Government Agency Website How to identify ▾

ONE MOTORING ☰

Click on the paired devices to view more details. You can also add or remove a paired device.

Click on notifications to edit how you want to receive them for that vehicle's OBU.

View your payment history at the [Enquire OBU Transaction History](#) digital service.

Details of On-Board Units

e.g. SFW1234J 🔍

S/No.	Vehicle No.	OBU Label
1	FBN2502H	No OBU installed
2	FX1255C	0771002261 Warranty Expires: 01 Apr 2024

Linked Payment Account [Sign Up!](#)

Paired Devices **No**

Notification [No](#)

Show 5 entries ⬆

Step 6: Tap on “Pair New Device”.

A Singapore Government Agency Website How to identify ▾

ONE MOTORING ☰

Welcome, XXXX582A Session Date: 21 Jul 2023

View/Edit On-Board Unit (OBU) Settings

Manage Paired Bluetooth Devices for On-Board Unit of FX1255C

You can pair a mobile device with your vehicle's On-Board Unit (OBU) to use apps, such as **name of all alternative OBU display app test**, which activates the device as an alternative display.

List of Bluetooth Devices

Select	S/No.	Device Name	MAC Address
No data available in table			

< Back

Pair New Device

Step 7: Enter Device name and MAC Address and “Next”.

A Singapore Government Agency Website | How to identify

ONE MOTORING

By pairing a device with the OBU, you are allowing applications running on the paired device to access data from the OBU.

Pair New Device

Vehicle No.:
FX1255C

Device Name *:
PHONE

MAC Address ([How to find it](#)) *:
01:23:45:67:89:10

* Mandatory field

Back Next

Please read through the [Privacy Statement](#), [Terms of Use](#) & [Disclaimer](#)

Step 8: Tap “Ok”.

New Device Paired

Success! You have paired a new device with FX1255C's On-Board Unit (OBU).

Device pairing will be completed when the OBU is online.

OK

Manage Paired Bluetooth Devices for On-Board Unit of FX1255C

You can pair a mobile device with your vehicle's On-Board Unit (OBU) to use apps, such as **name of all alternative OBU display app test**, which activates the device as an alternative display.

List of Bluetooth Devices

Select	S/No.	Device Name
<input type="checkbox"/>	1	PHONE

< Back Pair New Device Remove Paired Device

Step 9: You can add another Device or Remove added Device.

A Singapore Government Agency Website | How to identify

ONE MOTORING

Welcome, XXXX582A | Session Date: 21 Jul 2023

View/Edit On-Board Unit (OBU) Settings

Manage Paired Bluetooth Devices for On-Board Unit of FX1255C

You can pair a mobile device with your vehicle's On-Board Unit (OBU) to use apps, such as **name of all alternative OBU display app test**, which activates the device as an alternative display.

List of Bluetooth Devices

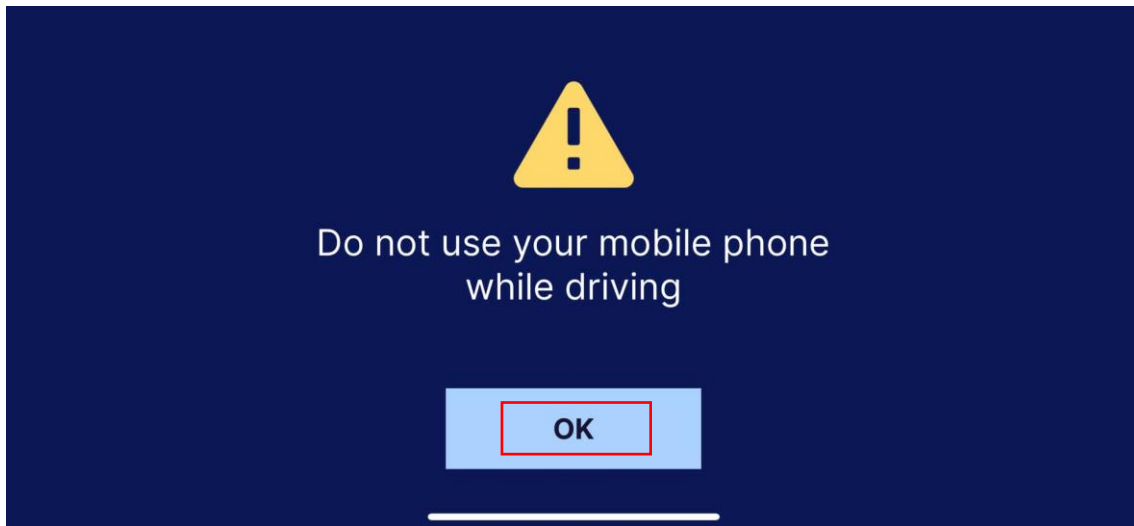
Select	S/No.	Device Name
<input checked="" type="checkbox"/>	1	PHONE

< Back Pair New Device Remove Paired Device

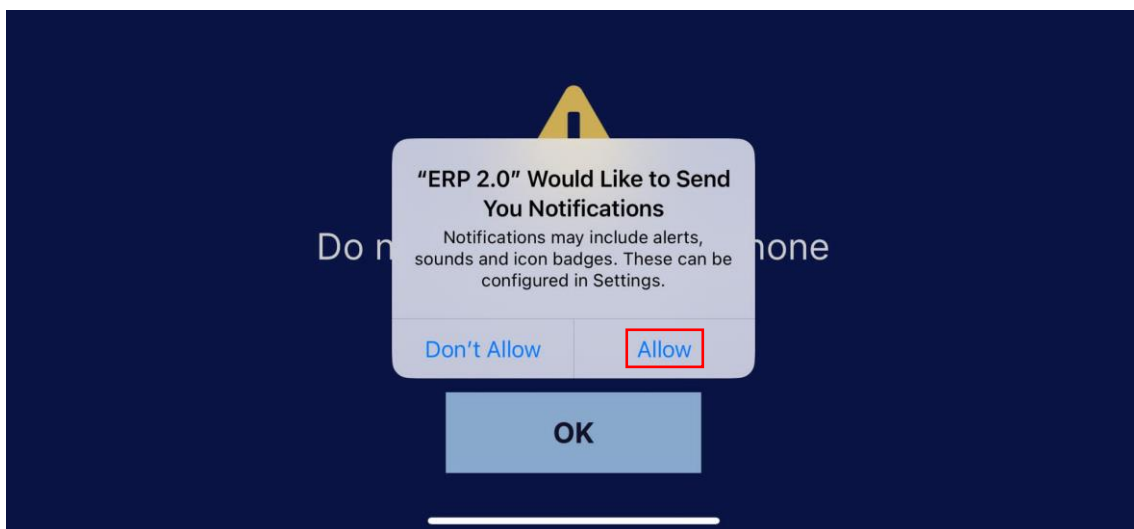
Steps to pair your Phone with OBU using ERP 2.0 Mobile Application



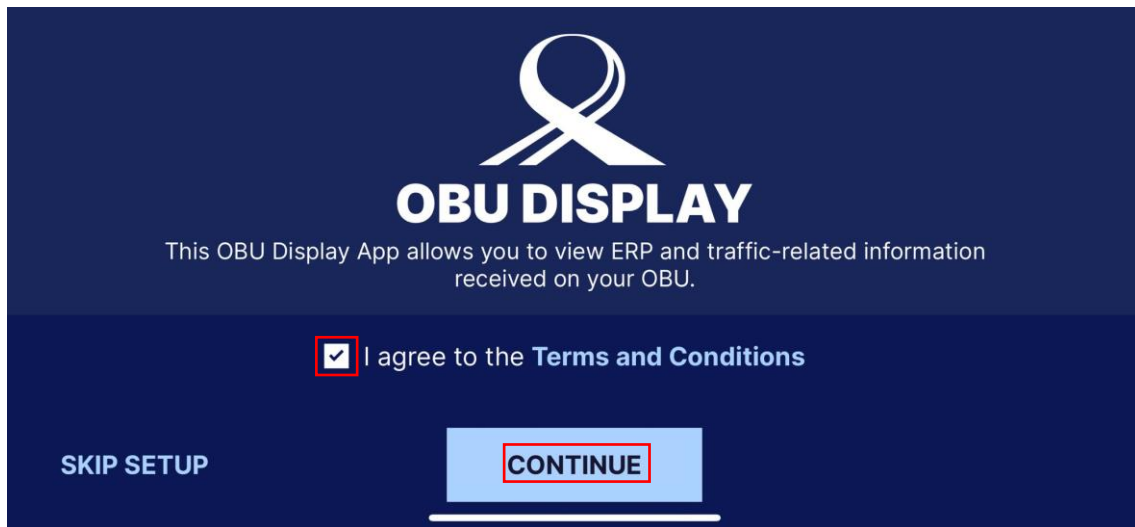
1. Launch "ERP 2.0" mobile application



2. Acknowledge Caution message while driving



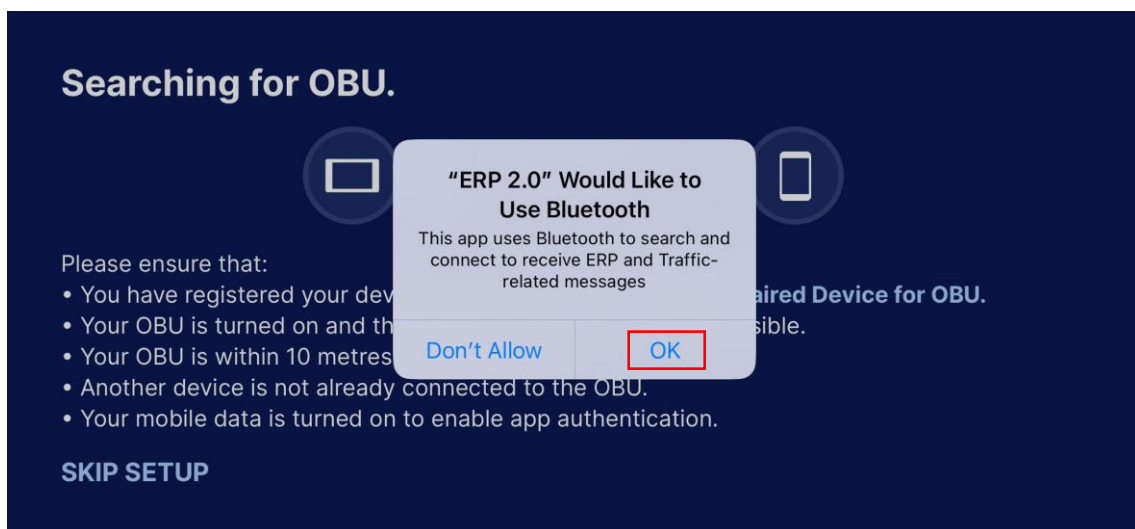
3. Allow "ERP 2.0" to send you Notifications



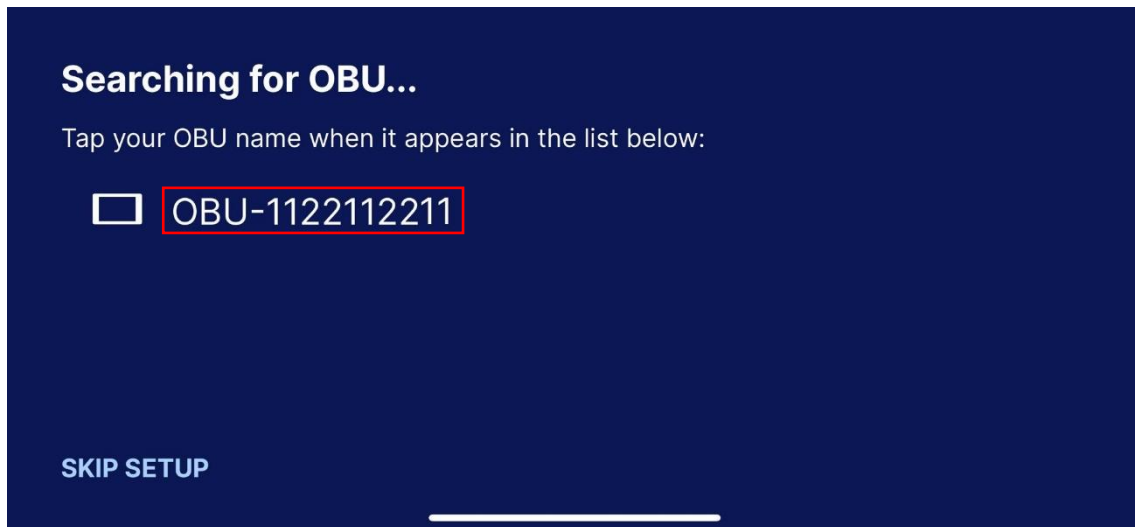
4. Agree to the Terms and Conditions to continue



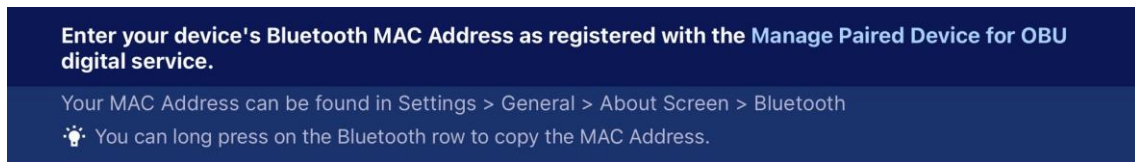
5. Allow "ERP 2.0" to access your OBU data



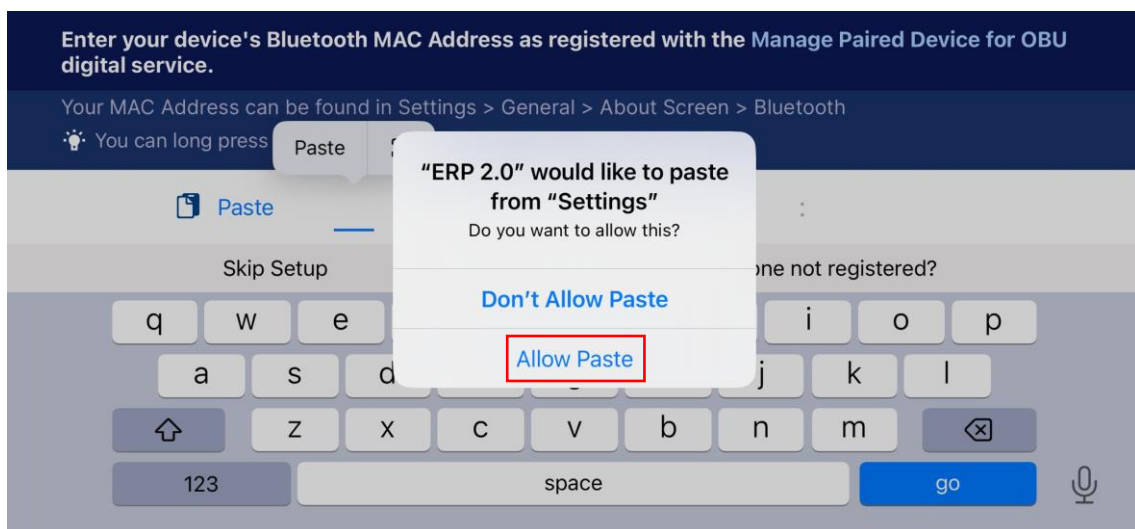
6. Allow "ERP 2.0" to use Bluetooth to search for your OBU



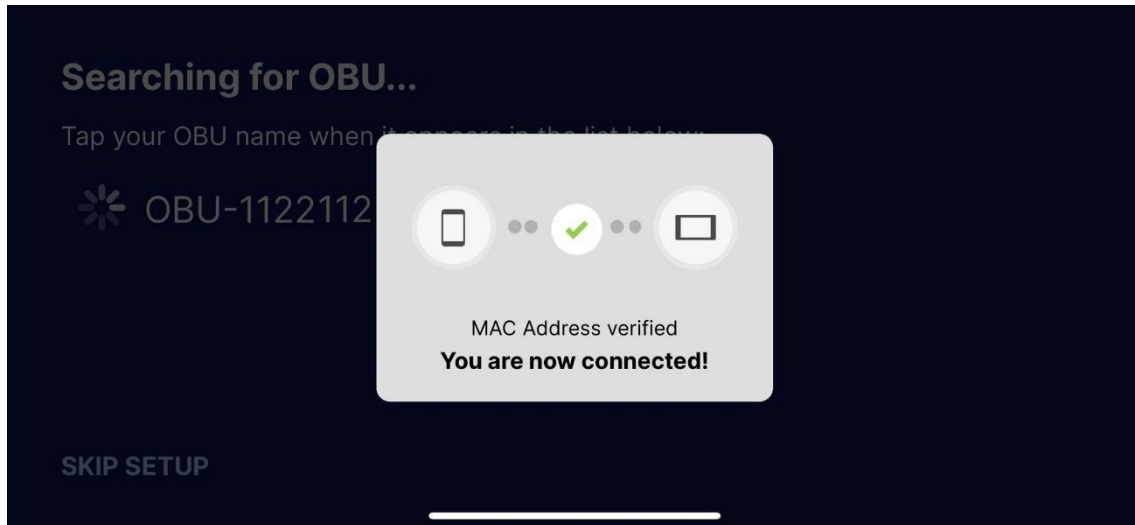
7. Tap on your OBU to pair



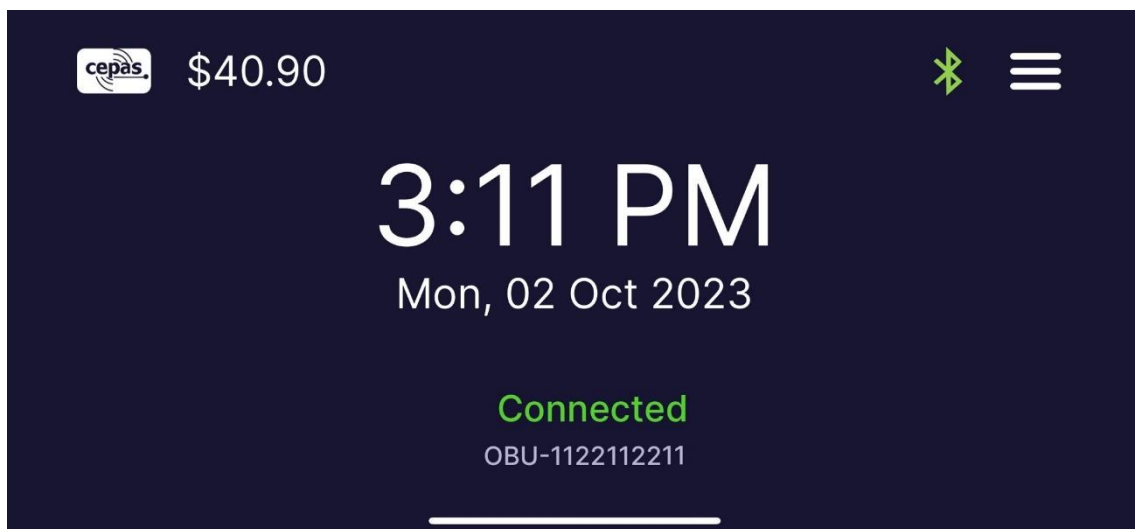
8. Copy and paste your registered Bluetooth MAC Address



9. Allow Paste to pass Bluetooth MAC Address and go



10. MAC Address verified and connected successfully



11. Ready to use